

**CORE DRIVERS
LEADING TO THE FAR EAST**



**PLASMA FRESH
HAND DRYER**



EXTRAORDINARY CREATIVITY

PLASMA FRESH HAND DRYER

INTELLIGENT MANUFACTURING
BRINGS FRESHNESS
PROTECTING HEALTH



Product Features



Strictly Select
Materials



Curve Design



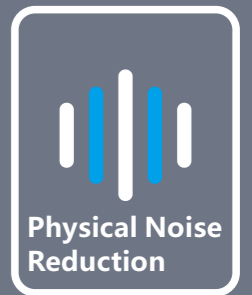
Intellisense



High-speed
Jet Flow



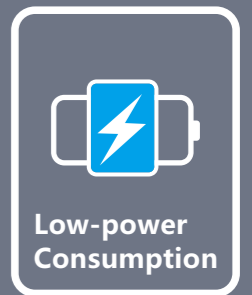
Cold And Warm
Regulation



Physical Noise
Reduction



Quickly
Dry Hands



Low-power
Consumption



HEPA
High Efficiency Filter

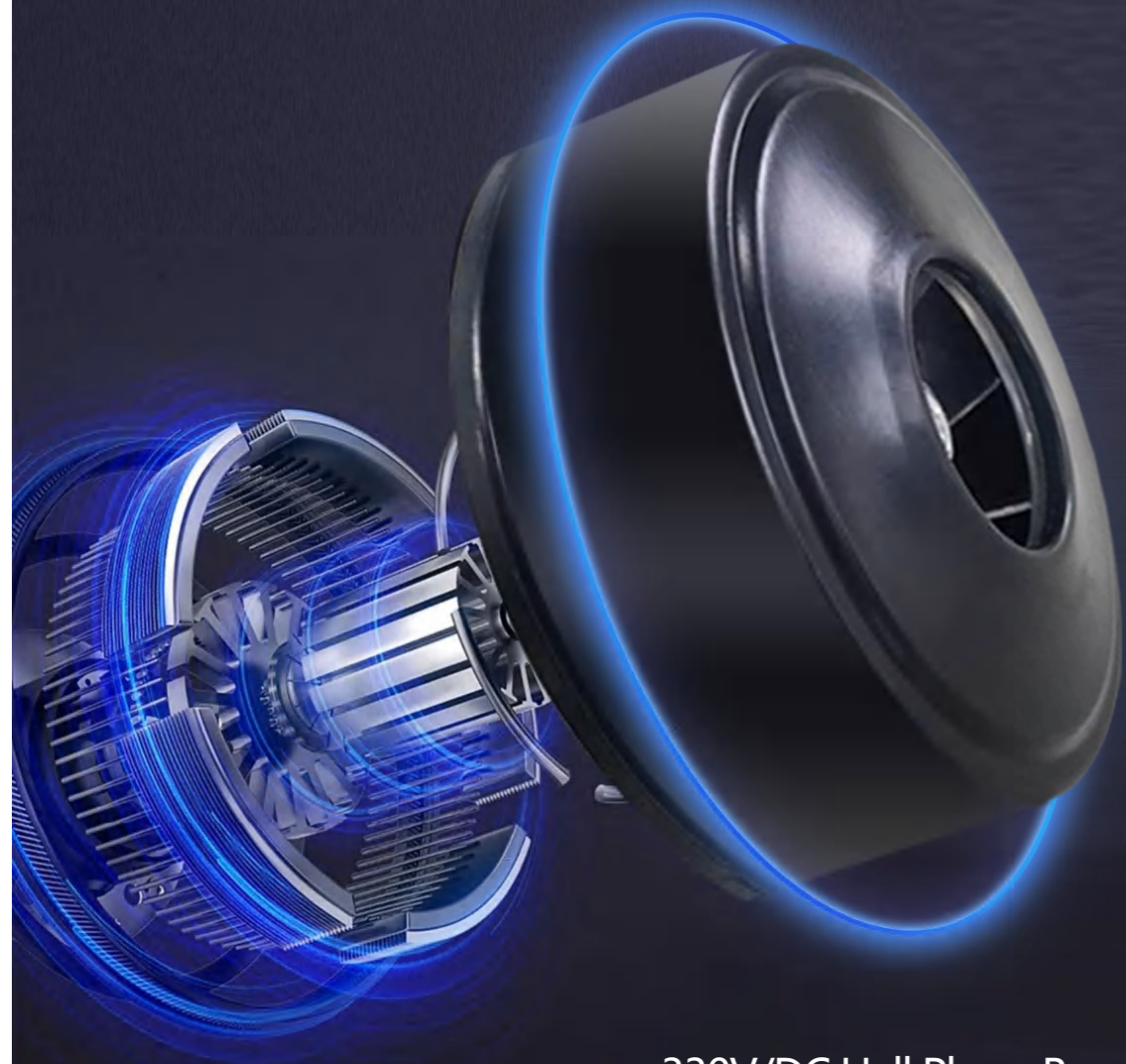


Strong Power



IT'S NOT JUST
ABOUT APPEARANCE

Strong wind **AND** low noise
Due to the precision manufacturing of advanced driving technology



330V/DC Hall Phase Brushless Motor

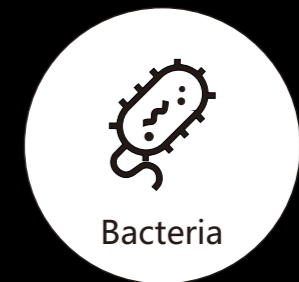
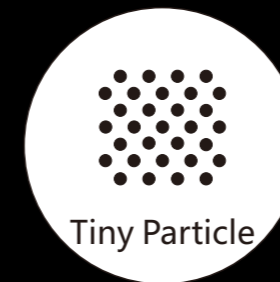
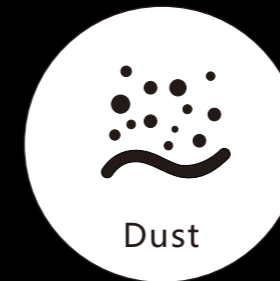
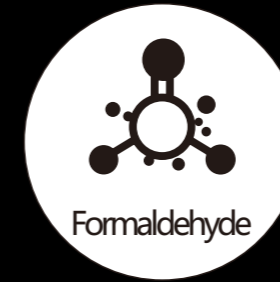
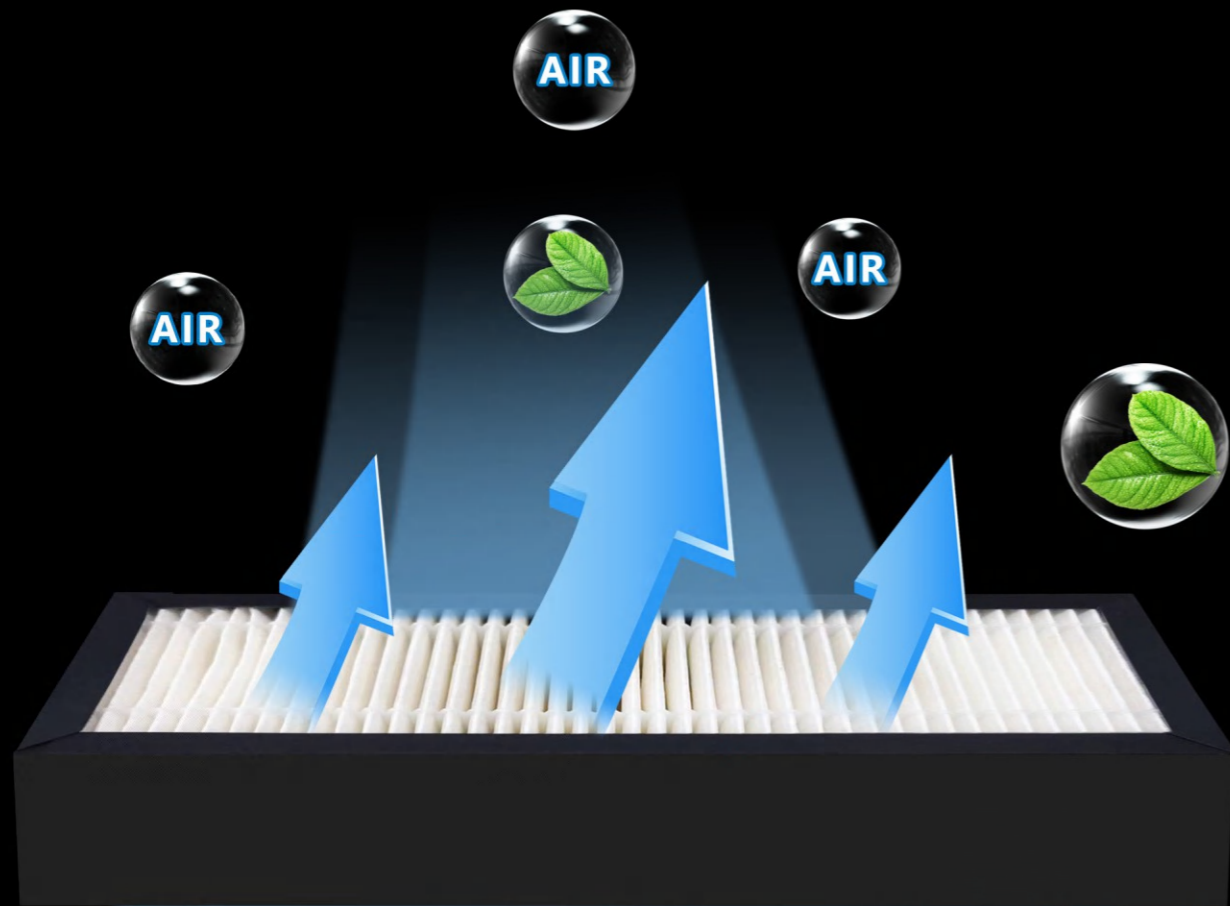
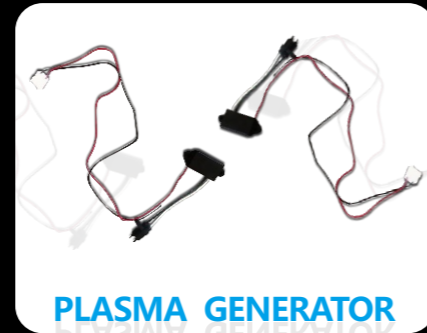
LOW NOISE OPERATION
SHUN'ER SOUND

62dB(A)



HEPA

Efficient Filtration Clearer Air Outlet



Intercept **6** Major Pollutants

Effective oxygen production, ensuring
the use of fresh air and drying hands

Plasma Fresh Hand Dryer



Plasma Fresh Hand Dryer



Model configuration: 330V/DC Hall brushless motor/high-speed motor
Display screen: Tempered glass touch button 3D animation demonstration
Power: 1200W
Wind speed: brushless motor 120m/s, high-speed motor 110m/s
Noise: ≥ 62 dB(A)
Warm air: automatic heating/forced heating below 25 °C
Plasma generator: Double bracket carbon fiber high-pressure brush
Double filtration: HEPA high-efficiency filter+200 mesh filter screen
Model specifications: 187×293×128mm



DOUBLE SIDED SPRAY HAND DRYER

New Design
Strong Wind Noise Reduction
Quickly Dry Hands



Model configuration: High speed motor Brushless motor
Power: 1650W/1900W
Wind speed: 95m/s
Noise: ≥ 76dB (A)
Bearing: Japanese NMB DD grade high-speed bearing
Speed: 20000RPM
Drive: Hall Phase/Digital Modular Integrated Circuit
Heating: ≥ 25 °C Automatic heating
Inlet air filtration: 200 mesh filter HEPA high-efficiency filter
Model specifications: 690×298×220mm

- 
 Porcelain
- 
 Silver
Gray
- 
 Golden
- 
 Rubber
Black

3D ANIME DEMONSTRATION



SMART STAY APPROACHING AWAKENING

**Intelligent
Black Technology
Elegant Dry Hand
Experience**



Model configuration: High speed motor Brushless motor
Intelligence: Human body approaching wake-up leaving sleep standby mode
Power: 2000W
Wind speed: 100m/s
Noise: > 74dB (A)
Bearing: Japanese NMB DD grade high-speed bearing
Speed: 22000RPM
Drive: Hall Phase/Digital Modular Integrated Circuit
Heating: > 25 °C Automatic heating
Water tray: Full water level light flashing prompt
Inlet air filtration: 2 sets of HEPA high-efficiency filters
Model specifications: 675×289×203mm

- 
 Porcelain
- 
 Silver
Gray
- 
 Golden
- 
 Rubber
Black



Model configuration: High speed motor Brushless motor
Power: 2000W
Wind speed: 100m/s
Noise: > 74dB (A)
Bearing: Japanese NMB DD grade high-speed bearing
Speed: 22000RPM
Drive: Hall Phase/Digital Modular Integrated Circuit
Heating: > 25 °C Automatic heating
Panel: SLIM 7s heat transfer printing
Inlet air filtration: 2 sets of HEPA high-efficiency filters
Model specifications: 566×296×164mm

**High speed dry hands
No need to wait**





LOGO/LED BACKLIGHT



Model configuration: High speed motor Brushless motor
Power: 2000W
Wind speed: 100m/s
Noise: > 72dB (A)
Bearing: Japanese NMB DD grade high-speed bearing
Speed: 22000RPM
Drive: Hall Phase/Digital Modular Integrated Circuit
Heating: > 25 °C Automatic heating
Water tray: Full water level light flashing prompt
Inlet air filtration: HEPA high-efficiency filter
Model specifications: 530×295×180mm

LOGO/LED BACKLIGHT



Model configuration: High speed motor Brushless motor
Power: 2000W
Wind speed: 100m/s
Noise: > 72dB (A)
Bearing: Japanese NMB DD grade high-speed bearing
Speed: 22000RPM
Drive: Hall Phase/Digital Modular Integrated Circuit
Heating: > 25 °C Automatic heating
Water tray: Full water level light flashing prompt
Inlet air filtration: HEPA high-efficiency filter
Model specifications: 530×295×180mm



CLEAN
Endless Purity



SHARP LASER INDUCTION FROM JAPAN

Fingerprint Resistant Surface Coating



Wire Drawing Baked Paint

Model configuration: High speed motor Brushless motor
Power: 1800W
Wind speed: 95m/s
Noise: > 72dB (A)
Induction: Sharp Laser Induction from Japan
Bearing: Japanese NMB DD grade high-speed bearing
Speed: 20000RPM
Drive: Hall Phase/Digital Modular Integrated Circuit
Heating: > 25 °C Automatic heating
Inlet air filtration: HEPA high-efficiency filter
Model specifications: 660×290×180mm

SIMPLE

Simple Yet
Extraordinary

SHARP LASER INDUCTION FROM JAPAN

Fingerprint Resistant Surface Coating

Model configuration: High speed motor Brushless motor
Power: 1800W
Wind speed: 95m/s
Noise: > 72dB (A)
Induction: Sharp Laser Induction from Japan
Bearing: Japanese NMB DD grade high-speed bearing
Speed: 20000RPM
Drive: Hall Phase/Digital Modular Integrated Circuit
Heating: > 25 °C Automatic heating
Inlet air filtration: HEPA high-efficiency filter
Model specifications: 660×290×180mm



Wire
Drawing



Baked
Paint



The Beauty of Arc

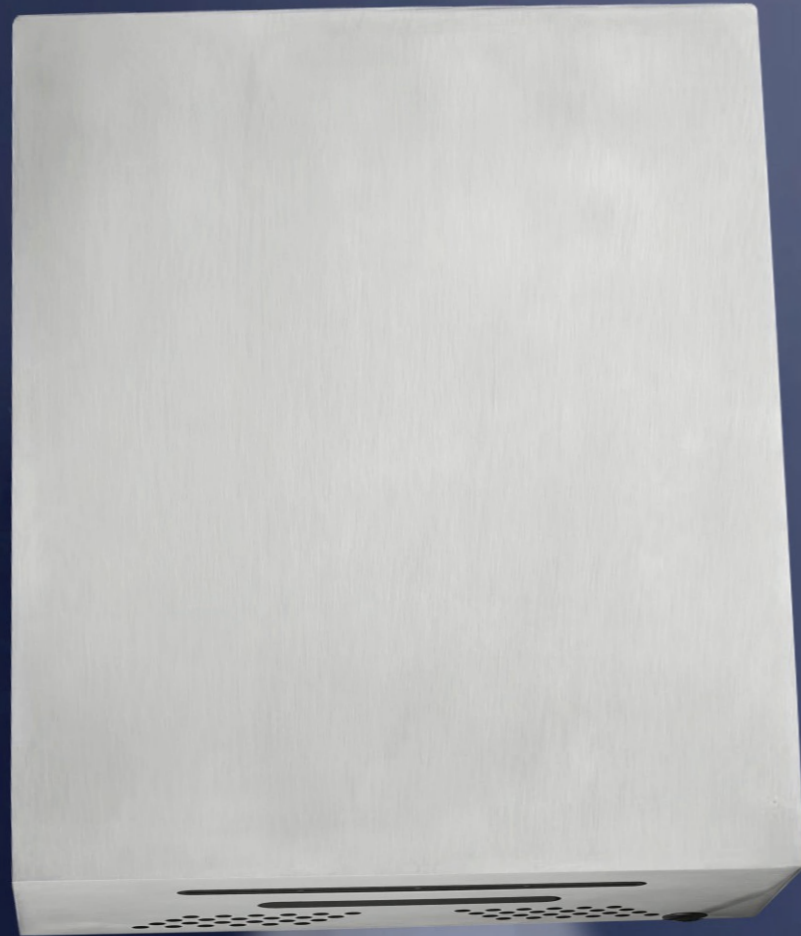
Showcasing extraordinary taste
Soft and graceful curves, light luxury and simplicity



STAINLESS STEEL HIGH-SPEED HAND DRYER





Model configuration: High speed motor/brushless motor Lighting: standby green light/working blue light
 Power: 1200W Bearing: Swedish DD grade high-speed bearing
 Wind speed: 110m/s Drive: Hall Phase/Digital Modular Integrated Circuit
 Noise: > 65dB (A) Heating: > 25 °C Automatic heating
 Speed: 36000RPM Inlet air filtration: HEPA high-efficiency filter
 Induction: 5-15cm fine adjustment Model specifications: 240×285×99.9mm



Model configuration: High speed motor Brushless motor
Power: 1200W
Wind speed: 110m/s
Noise: > 65dB (A)
Speed: 36000RPM
Induction: 5-15cm fine adjustment
Lighting: standby green light/working blue light
Bearing: Swedish DD grade high-speed bearing
Drive: Hall Phase/Digital Modular Integrated Circuit
Heating: > 25 °C Automatic heating
Inlet air filtration: HEPA high-efficiency filter
Model specifications: 240×285×99.9mm



Model configuration: High speed motor Brushless motor
Power: 1200W
Wind speed: 110m/s
Noise: > 65dB (A)
Speed: 36000RPM
Induction: 5-15cm fine adjustment
Lighting: standby green light/working blue light
Bearing: Swedish DD grade high-speed bearing
Drive: Hall Phase/Digital Modular Integrated Circuit
Heating: > 25 °C Automatic heating
Inlet air filtration: HEPA high-efficiency filter
Model specifications: 240×285×99.9mm

 Wire Drawing  Baked Paint

STAINLESS STEEL



Cleaner More environmentally friendly
More durable



Model configuration: High speed motor
Power: 1400W
Wind speed: 100m/s
Noise: > 65dB (A)
Speed: 26000RPM
Induction: Automatic Induction
Protection: 115 °C motor temperature protection device
Model specifications: 159×173×256mm



Wire
Drawing



Baked
Paint

Model configuration: High speed motor	Induction: Automatic Induction
Power: 1400W	Heating: > 25 °C Automatic heating
Wind speed: 110m/s	Inlet air filtration: filter sponge
Noise: >60dB(A)	Model specifications: 247×238×138mm
Speed: 36000RPM	



 Wire Drawing
 Baked Paint



STAINLESS STEEL HIGH-SPEED HAND DRYER

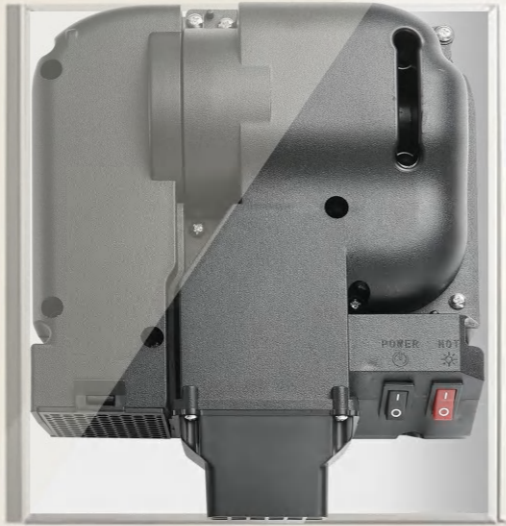
Intellisense Strong Wind Power
Quickly Dry Hands



Model configuration: High speed motor
Power: 1400W
Wind speed: 110m/s
Noise: > 60dB (A)
Speed: 36000RPM
Induction: Automatic Induction
Heating: > 25 °C Automatic heating
Inlet air filtration: filter sponge
Model specifications: 215×190×128mm

ULTRA THIN MIRROR BACK HAND DRYER

Model configuration: High speed motor Brushless motor
Power: 1200W
Wind speed: 110m/s
Noise: > 65dB (A)
Speed: 36000RPM
Induction: 5-15cm fine adjustment
Lighting: standby green light/working blue light
Bearing: Swedish DD grade high-speed bearing
Drive: Hall Phase/Digital Modular Integrated Circuit
Heating: > 25 °C Automatic heating
Inlet air filtration: HEPA high-efficiency filter
Model specifications: 200×260×96mm



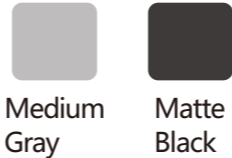
Model configuration: High speed motor
Power: 1200W
Wind speed: 100m/s
Noise: > 69dB (A)
Speed: 26000RPM
Heating: > 25 °C Automatic heating
Induction: 5-15cm fine adjustment
Lighting: standby green light/working blue light
Model specifications: 215×275×118mm



Model configuration: High speed motor
Power: 1200W
Wind speed: 100m/s
Noise: > 69dB (A)
Speed: 26000RPM
Heating: > 25 °C Automatic heating
Induction: 5-15cm fine adjustment
Lighting: standby green light/working blue light
Model specifications: 215×275×118mm

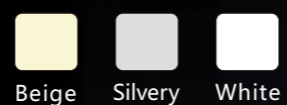


Model configuration: High speed motor/Brushless motor
Power: 1200W
Wind speed: 110m/s
Noise: > 65dB (A)
Speed: 36000RPM
Induction: 5-15cm fine adjustment
Lighting: standby green light/working blue light
Bearing: Swedish DD grade high-speed bearing
Drive: Hall Phase/Digital Modular Integrated Circuit
Heating: > 25 °C Automatic heating
Inlet air filtration: HEPA high-efficiency filter
Model specifications: 200×260×96mm



HIGH SPEED ALL ALUMINUM HAND DRYER

Model configuration: High speed motor	Speed: 26000RPM
Power: 1800W	Heating: ≥ 25 °C Automatic heating
Wind speed: 90m/s	Model specifications: 250×210×170mm
Noise: ≥69dB(A)	



Model configuration: High speed motor
Power: 1800W
Wind speed: 90m/s
Noise: ≥69dB(A)
Speed: 26000RPM
Heating: ≥ 25 °C Automatic heating
Induction: Automatic Induction
Model specifications: 240×200×155mm

HIGH SPEED DRY HANDS 90M/S High Wind Speed

Instantly automatic sensing of wind,
quickly spreading dryness and dryness



Model configuration: High speed motor
Power: 1500W
Wind speed: 90m/s
Noise: > 63dB (A)
Speed: 20000RPM
Induction: Automatic Induction
Model specifications: 472×252×170mm



White



High Speed Hand Dryer

Model configuration: High speed motor
Power: 1150W
Wind speed: 90m/s
Noise: > 63dB (A)
Speed: 20000RPM
Heating: > 25 °C Automatic heating
Induction: Automatic Induction
Model specifications: 472×252×170mm



Streamline Hand Dryer

Model configuration: Ball capacitor motor
Power: 1400W
Wind speed: 35m/s
Noise: > 45dB (A)
Speed: 26000RPM
Induction: Automatic Induction
Model specifications: 265×150×205mm



Automatic Sensing/instantly Dry Hands

Quality Is Impeccable | Focus On Hand Dryers



Model configuration: Ball capacitor motor
 Power: 1500W
 Wind speed: 35m/s
 Noise: ≥ 45dB (A)
 Speed: 26000RPM
 Induction: Automatic Induction
 Model specifications: 265×155×200mm



White



Model configuration: Ball capacitor motor
Power: 1200W
Wind speed: 35m/s
Noise: ≥ 45dB (A)
Speed: 26000RPM
Induction: Automatic Induction
Model specifications: 255×205×125mm



Model configuration: Ball capacitor motor
Power: 1800W
Wind speed: 35m/s
Noise: ≥ 45dB (A)
Speed: 26000RPM
Induction: Automatic Induction
Model specifications: 250×238×230mm

Two In One Faucet Hand Dryer

Middle Water Outlet/Dry Hands On Both Sides



Technical Parameter

Rated voltage Frequency	220-240VAC,50/60Hz	Wind Speed	90m/s
Rated Power	Cold air 500W/Hot air 1000W	Hand Drying Time	10-15S
Ambient Temperature	5-40°C	Maximum Duration Of Dry Hands Per Session	60S
Ambient Humidity	≤ 80%	Motor Type	Dc Brushless Motor/brushed Motor
Sense Distance	3-12cm	Shipping Method	Infrared Sensing
Protection Grade	IPX4	Maximum Altitude	2000m
Installation Of Faucet	On Stage Installation	Inlet pipe joint	G1/2"
Working Water Temperature	1-55°C	Working Water Pressure	1-8bar
Maximum Duration Of A Single Water Discharge	60s	Basin Opening Diameter	Φ35mm
Faucet Size	300X185X200(mm)	Minimum Basin Depth	100mm(prevent Shallow Splashing Of Water)
Inappropriate Basin Surface	Mirror Chrome Plating Or High Mirror Polishing (can Cause Infrared Self Sensing)		

Function	Material Of Faucet	Faucet Color	Inner Box Size (1 Unit)	Single packaging weight	Outer Box Size (pack Of 2)	1 Piece Weight
Wash Hands + Hands Dry	USU304 Stainless Steel	Wire Drawing	43.5x37.5x32	6.2kg	45.5X39X67	13.4kg



Three In One Faucet Hand Dryer
Left Soap/Middle Water Outlet/Right Hand Dryer

Technical Parameter

Rated voltage Frequency	110/220-240VAC,50/60Hz	Wind Speed	80m/s
Rated Power	1000W (Hands Dry)	Hand Drying Time	10-20s
Ambient Temperature	5-40°C	Maximum Duration Of Dry Hands Per Session	60s
Ambient Humidity	≤80%	Motor Type	Dc Brushless Motor
Sense Distance	3-12cm	Shipping Method	Infrared Sensing
Protection Grade	IPX4	Maximum Altitude	2000m
Installation Of Faucet	On Stage Installation	Inlet pipe joint	G1/2"
Working Water Temperature	1-55°C	Working Water Pressure	1-8bar
Maximum Duration Of A Single Water Discharge	60s	Basin Opening Diameter	Φ35mm
Faucet Size	360X185X205(mm)	Minimum Basin Depth	100mm(prevent Shallow Splashing Of Water)
Inappropriate Basin Surface	Mirror Chrome Plating Or High Mirror Polishing (can Cause Infrared Self Sensing)		

Function	Material Of Faucet	Faucet Color	Inner Box Size (1 Unit)	Single packaging weight	Outer Box Size (pack Of 2)	1 Piece Weight
Soap+Washing+Dry	Copper Chrome	Chrome	36x42x25	5.7kg	44X38X52.5	12.3kg



Technical Parameter

Rated voltage Frequency	220-240VAC,50/60Hz	Wind Speed	80m/s
Rated Power	1000W (Hands Dry)	Hand Drying Time	10-20s
Ambient Temperature	5-40°C	Maximum Duration Of Dry Hands Per Session	60s
Ambient Humidity	≤80%	Motor Type	Dc Brushless Motor
Sense Distance	3-12cm	Shipping Method	Infrared Sensing
Protection Grade	IPX4	Maximum Altitude	2000m
Installation Of Faucet	On Stage Installation	Inlet pipe joint	G1/2"
Working Water Temperature	1-55°C	Working Water Pressure	1-8bar
Maximum Duration Of A Single Water Discharge	60s	Basin Opening Diameter	Φ35mm
Faucet Size	360X155X205(mm)	Minimum Basin Depth	100mm(prevent Shallow Splashing Of Water)
Inappropriate Basin Surface	Mirror Chrome Plating Or High Mirror Polishing (can Cause Infrared Self Sensing)		

Function	Material Of Faucet	Faucet Color	Inner Box Size (1 Unit)	Single packaging weight	Outer Box Size (pack Of 2)	1 Piece Weight
Soap+Washing+Dry	USU304 Stainless Steel	Wire Drawing	36x42x25	5.7kg	44X38X52.5	12.3kg



Colour: Beige
 Material: ABS/PP
 Bearing capacity: 30kg
 Specifications: 1160×235×24mm



Colour: Beige
 Material: ABS/PP
 Bearing capacity: 30kg
 Specifications: 690×235×24mm

Colour: Grey
 Material: ABS/PP
 Bearing capacity: 30kg
 Specifications: 510×345×310mm



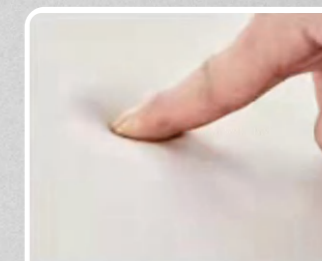
Colour: Beige
 Material: ABS/PP
 Bearing capacity: 30kg
 Specifications: 690×235×24mm

BABY CARE CHAIR

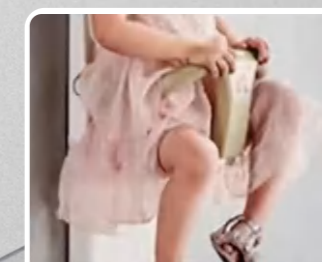
Colour: Beige



Folding and folding to save space



Soft backrest



Load capacity: 30kg

Material: ABS/PP
 Bearing capacity: 30kg
 Specifications: 1160×235×24mm

Suitable for babies aged 1-3 years old, with a load-bearing capacity of up to 30 kilograms and an 8MM drill bit for drilling!



Colour: Beige
Material: PE/PP
Bearing capacity: 50kg
Specifications: 850×540×480mm

